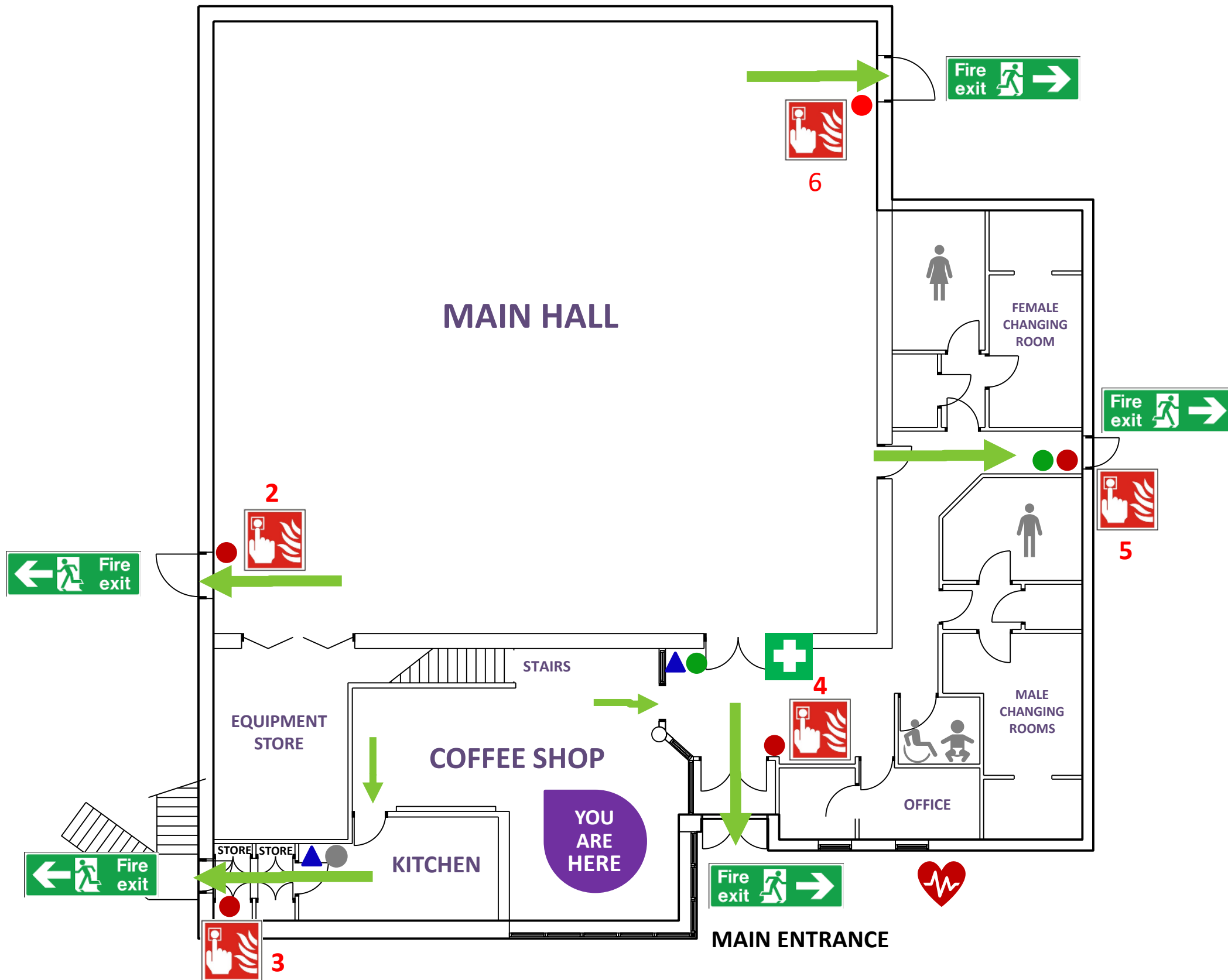


Fire Escape Plan Kingswells Community Centre

GROUND FLOOR PLAN



If you discover a fire

- Raise the alarm.
- Dial **999** to call the Fire & Rescue service to: **KINGSWELLS COMMUNITY CENTRE, AB15 8TG**
- Attack the fire if possible, using the appliances provided

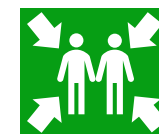
If you hear the fire alarm

- Close doors and windows behind you.
- Leave the building by the nearest available exit.
- Report to the fire assembly point at:

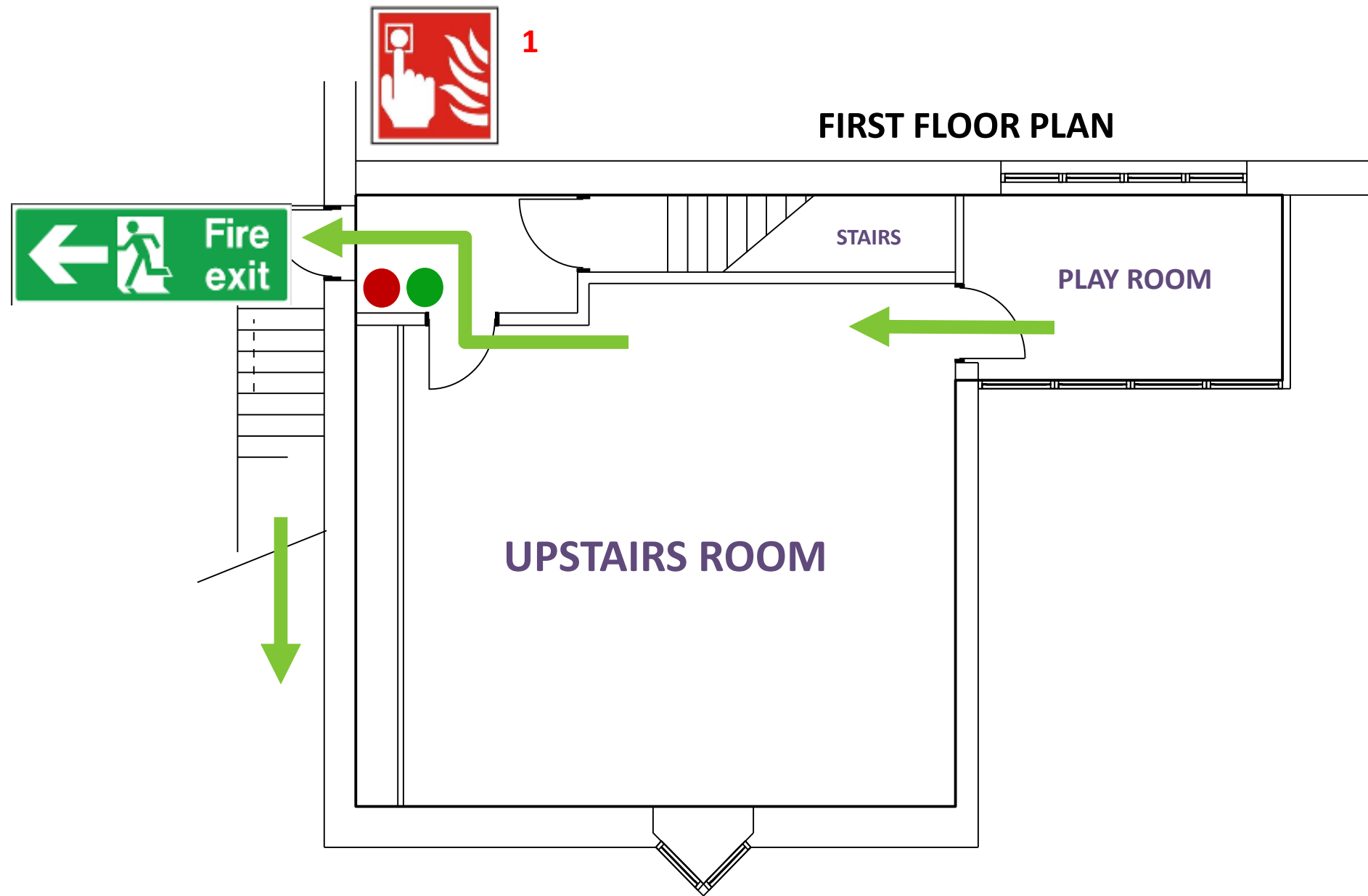
POST BOX AT BOTTOM OF CAR PARK

- **Do not stop to collect personal belongings.**
- **Do not re-enter the building for any reason until told it is safe to do so.**
- **Do not take unnecessary risks**

- Fire Alarm Call Points
- Fire Extinguisher – FOAM
Wood, paper, material, oil, fats, carpets, flammable liquids
- ▲ Fire Extinguishers – CO2
Electrical & flammable liquids
- Fire Blanket
- ✚ First Aid Point – Outside hall door
- ❤ Defibrillator – Outside (Call 999 for access)



Fire Escape Plan Kingswells Community Centre



If you discover a fire

- Raise the alarm.
- Dial **999** to call the Fire & Rescue service to: **KINGSWELLS COMMUNITY CENTRE, AB15 8TG**
- Attack the fire if possible, using the appliances provided

If you hear the fire alarm

- Close doors and windows behind you.
- Leave the building by the nearest available exit.
- Report to the fire assembly point at:

POST BOX AT BOTTOM OF CAR PARK

- **Do not stop to collect personal belongings.**
- **Do not re-enter the building for any reason until told it is safe to do so.**
- **Do not take unnecessary risks**

- Fire Alarm Call Points
- Fire Extinguisher – FOAM
Wood, paper, material, oil, fats, carpets, flammable liquids
- ▲ Fire Extinguishers – CO2
Electrical & flammable liquids
- Fire Blanket
- ✚ First Aid Point – Outside hall door
- ❤ Defibrillator – Outside (Call 999 for access)

